

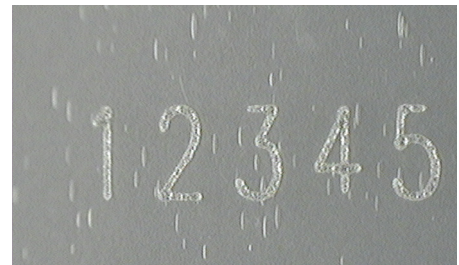
# CO<sub>2</sub> Laser Marking Systems



*In line PCB marker*

- Excellent for marking PCB materials & organics
- Mark 'on the fly'
- Vision & barcode verification options
- Process flow configuration options
- Standard and custom systems

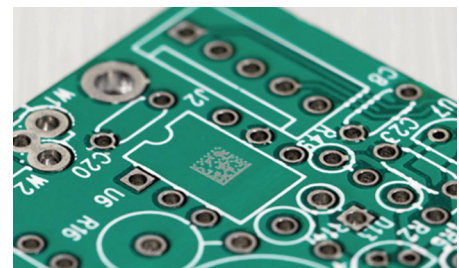
## TYPICAL APPLICATIONS



*Thin film polyester*



*Surface marking of glass*



*PCB materials*

## KEY FEATURES

- **Excellent Laser Source for PCB Marking** – The CO<sub>2</sub> laser operating at 10604nm enables marking of high quality text and barcodes directly onto the FR4 material, labels or screen printed areas
- **Mark 'On the Fly'** – With the option of mark on the fly moving parts can be marked for in line processing
- **Standard and Custom Enclosures** – A variety of standard and custom enclosures provide flexibility in accommodation of floor space availability and system options
- **Integration Options** – Depending upon the application and mark requirements, options such as barcode scan program select, vision corrected marking and barcode verification are available
- **System Configuration** – A number of system configurations offer options for loading/unloading and process flow

**CO<sub>2</sub> LASER SPECIFICATIONS**

Field sizes inches (mm):	1.1 x 1.1 (27 x 27) – 7.8 x 7.8 (198 x 198)
Wavelength (nm):	10604
Power:	10, 30W
Minimum Character height inches (mm):	0.02 (0.5)
Mode Quality	M <sub>2</sub> 1.2
Rise Time	<100 sec
Beam Diameter	2.5±0.5 mm
Beam Divergence (full angle)	<7.0mR
Power Stability, from cold start (guaranteed)	±5%
Power Stability, after 2 min	±3%
Polarization	Linear (Horizontal)
Cooling:	Air or water cooled
Operating Temperature:	15 – 40C
Relative Humidity:	0 – 95%, non condensing

**SYSTEMS SPECIFICATIONS**

Loading options:	Single point, multiple point (rotary table)
System Configurations:	Standalone, in-line
Integration Options:	Motion, vision corrected marking, custom user interface, barcode read/verification, tooling, part viewing with camera
Electrical:	100 – 240 VAC, 50-60 Hz



AMADA MIYACHI AMERICA, INC.

1820 S. Myrtle Ave. • P.O. Box 5033  
 Monrovia, CA 91017-7133 US  
 T: (626) 303-5676 • F: (626) 358-8048  
 info@amadamiyachi.com • www.amadamiyachi.com  
 ISO 9001 Certified Company • 24/7 Repair Service: 1-866-751-7378

**MIYACHI** | **MIYACHI** | **MIYACHI**  
 UNITEK | P E C O | E A P R O

**Amada Miyachi America Midwest Sales Office:**  
 50384 Dennis Ct., Wixom, MI 48393  
 T: 248 313 3078 • F: 248 313 3031  
 midwestsales@amadamiyachi.com

**Amada Miyachi America Mexico Sales Office:**  
 5959 Gateway West, Ste 327, El Paso, TX 79925  
 T: (915) 881-8765  
 mxsales@amadamiyachi.com

**Amada Miyachi Co., Ltd.**  
 200 Ishida, Isehara  
 Kanagawa, 259-1196 Japan  
 T:+81-4-7125-6177

**Amada Miyachi Shanghai Co., Ltd.**  
 Room 01, 15th Floor, SML Center, No.610 Xujiahui Rd  
 Huangpu District, Shanghai 200025, CN  
 T:+86-21-6448-6000 • F:+86-21-6448-6550  
 zqzhang@msc.miyachi.com

**Amada Miyachi Europe GmbH**  
 Lindberghstrasse 1 • DE-82178 Puchheim  
 T: +49 (0) 89 83 94 030 • F: +49 (0) 89 83 94 0310  
 infode@amadamiyachi.eu

**Amada Miyachi do Brasil Ltda.**  
 Av. Ceci, 608 – Bloco 16B – Empresarial Tamboré,  
 06460-120, Barueri, SP, BR  
 T: +55 (11) 4193-1187 • antonio.ruiz@miyachi.com

follow us on:



Specifications subject to change without notice. Copyright© 2015 Amada Miyachi America Inc. The material contained herein cannot be reproduced or used in any other way without the express written permission of Amada Miyachi America Inc. All rights reserved.

Your Local Amada Miyachi Representative: