



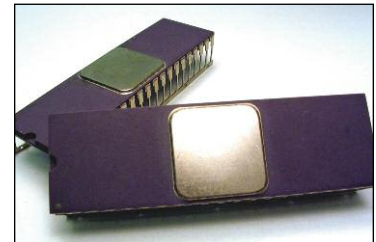
# MX2000 Glovebox

MX2000 is a modular **glovebox** system that can be configured to meet your specific process requirements and productivity goals with any combination of ovens and antechambers, gas analyzers, moisture monitors, and environmental chambers and controls.

## KEY FEATURES

- Wide choice of control capabilities ensures your process and budget needs are met
- A range of vacuum pumps – dry, rotary vane, turbo- molecular – to meet your antechamber or oven requirements
- Large window for excellent visibility and maintenance access
- Optional PLC for glovebox components is quickly programmed with easy-to-use software
- Sturdy, rugged construction for long equipment life and stable process platform
- Optional single or dual-column gas purification units deliver ultra-low moisture and oxygen levels
- Modular design enables economical glovebox customization for new systems, as well as easy upgrades as your process needs evolve

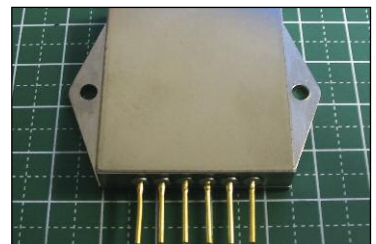
## TYPICAL APPLICATIONS



*Semiconductor components*



*Seam weld thin film*



*Seam sealed package*

## GLOVEBOX SPECIFICATIONS & OPTIONS

Features	
<b>Antechambers and ovens</b>	
<b>Configuration options</b>	End, front, rear loading
<b>Heating</b>	Wall heating or heated shelves
<b>Temperature</b>	125°C or 200°C, higher available
<b>Vacuum pumps</b>	Rotary vane, dry, or turbo pumps
<b>Analysis and monitoring capabilities</b>	
<b>Oxygen detection range</b>	0-1000 PPM or %
<b>Moisture detection range</b>	0-150 PPM or ° C dewpoint
<b>Helium monitoring</b>	%
<b>Argon Monitoring</b>	%
<b>Utilities</b>	
<b>Electrical</b>	208-240 VAC, single-phase, 50/60 Hz, 30 amps (40 amps with two ovens)

Specifications are subject to change without notice.

Features	
<b>Inputs</b>	
<b>Environmental gas</b>	60 psi (415 kPa)
Chilled water needed for oven flange cooling for 200° oven Not required with optional water re-circulator	
<b>Gas purification</b>	
<b>Single column</b>	30 CFM (51 m3/hr)
<b>Dual column</b>	Moisture and/or oxygen removal
<b>Automatic dual column</b>	
<b>Gas mixers</b>	
<b>Manual set mixers</b>	Two and three gas versions
<b>Others</b>	
<b>Soot removal systems</b>	30 CFM (51 m3/hr) or 100 CFM (170 m3/hr)
<b>CDRH Class 1 laser eyesafe window</b>	Wavelength based on application
<b>Light tower</b>	Indicates glovebox or process status
<b>Tool interchange</b>	Floor access, front loading
<b>Safety</b>	Light curtain, interlocks

## MX2000 – ANTECHAMBERS AND OVENS

Interior Size	Type	Control choices for vacuum, backfill, and temperature	Temperature
Length 355 mm (14 in) Width 195 mm (7.625 in) Height 195 mm (7.625 in)	Antechamber	<ul style="list-style-type: none"> <li>Flushing with manual set rotometer</li> <li>Manual</li> <li>Programmable logic control</li> </ul>	Not applicable
Length 465 mm (18.5 in) Width 290 mm (11.5 in) Height 265 mm (10.5 in)	Antechamber	<ul style="list-style-type: none"> <li>Manual</li> <li>Programmable logic control</li> </ul>	Not applicable
Length 355 mm (14 in) Width 195 mm (7.625 in) Height 195 mm (7.625 in)	Oven-wall heat	<ul style="list-style-type: none"> <li>Manual</li> <li>Programmable logic control</li> </ul>	125° or 200° C
Length 465 mm (18.5 in) Width 290 mm (11.5 in) Height 265 mm (10.5 in)	Oven-wall heat	<ul style="list-style-type: none"> <li>Manual</li> <li>Programmable logic control</li> </ul>	200° C
Length 465 mm (18.5 in) Width 290 mm (11.5 in) Height 265 mm (10.5 in) Shelf length 455 mm (18 in)	Oven-heated shelves	<ul style="list-style-type: none"> <li>Manual</li> <li>Programmable logic control</li> </ul>	200° or 300° C

Other antechambers and ovens available



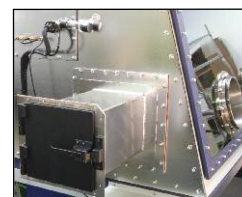
Heated wall oven



Heated wall oven



Heated shelf oven



Antechamber

## WEIGHT & DIMENSIONS (STANDARD GLOVEBOX SIZES)

	MX2000 - 48 in	MX2000 - 56 in
<b>Dimensions (L x W x H)</b>	39 in x 48 in x 36 in (965 mm x 1219 mm x 914 mm)	39 in x 56 in x 36 in (965 mm x 1423 mm x 914 mm)
<b>Number of glove ports</b>	2	4
<b>Weight</b>	Weight varies with selected options	

Other configurations and custom sizes available



1820 S. Myrtle Ave. • Monrovia, CA 91016 US  
T: (626) 303-5676 • F: (626) 358-8048  
info@amadamiyachi.com • www.amadamiyachi.com  
ISO 9001 Certified Company • 24/7 Repair Service: 1-866-751-7378

AMADA MIYACHI AMERICA, INC.

**AMERICAS**  
AMADA MIYACHI AMERICA (Midwest Office)  
Wixom, MI 48393  
T: (248) 313-3078  
midwestsales@amadamiyachi.com

AMADA MIYACHI DO BRASIL LTDA.  
Sao Paulo, Brasil  
T: +55-11-4193-3607  
antonio.ruiz@amadamiyachi.com

**EUROPE**  
AMADA MIYACHI EUROPE GmbH  
Puchheim, Germany  
T: +49 (0) 89 83 94 030  
infoe@amadamiyachi.eu

**ASIA**  
AMADA MIYACHI CO., LTD.  
Noda, 278-0016 Japan  
T: +81-31-8015-6810  
sales@miyachi.com

AMADA MIYACHI SHANGHAI CO., LTD.  
Shanghai, China  
T: +86-21-6448-6000  
jwu@msc.miyachi.com



AMADA MIYACHI KOREA CO., LTD.  
Gyeonggi-do, Korea  
T: +82-4-7125-6177  
dykim@mkc.miyachi.com

AMADA MIYACHI TAIWAN CO., LTD.  
Taipei, Taiwan R.O.C.  
T: +886-2-2585-0161

AMADA MIYACHI (THAILAND) CO., LTD.  
Samutprakarn, Thailand  
T: +66-2-170-5977  
info@mtl.miyachi.com

AMADA VIETNAM CO., LTD.  
Ha Noi, Vietnam  
T: +84-4-6261-4583

AMADA MIYACHI INDIA PVT., LTD.  
Bangalore, Karnataka  
T: +91-80-4092-1749  
or +91-80-4092-3549  
info@miyachiindia.com

AMADA MIYACHI AMERICA (Mexico Office)  
El Paso, TX 79925  
T: (915) 881-8765  
mxsales@amadamiyachi.com

Specifications subject to change without notice. Copyright© 2017 AMADA MIYACHI AMERICA, INC. The material contained herein cannot be reproduced or used in any other way without the express written permission of AMADA MIYACHI AMERICA, INC. All rights reserved.



follow us on: