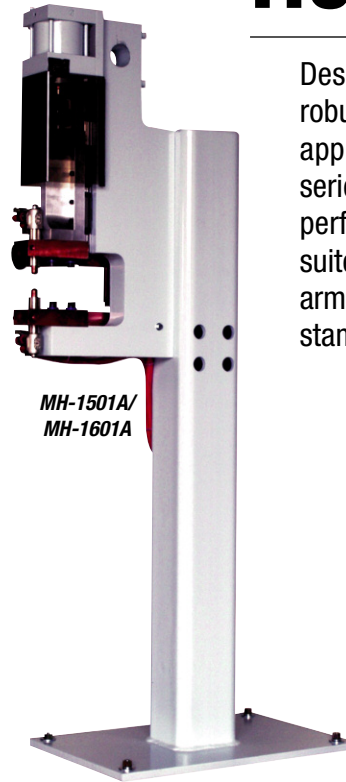
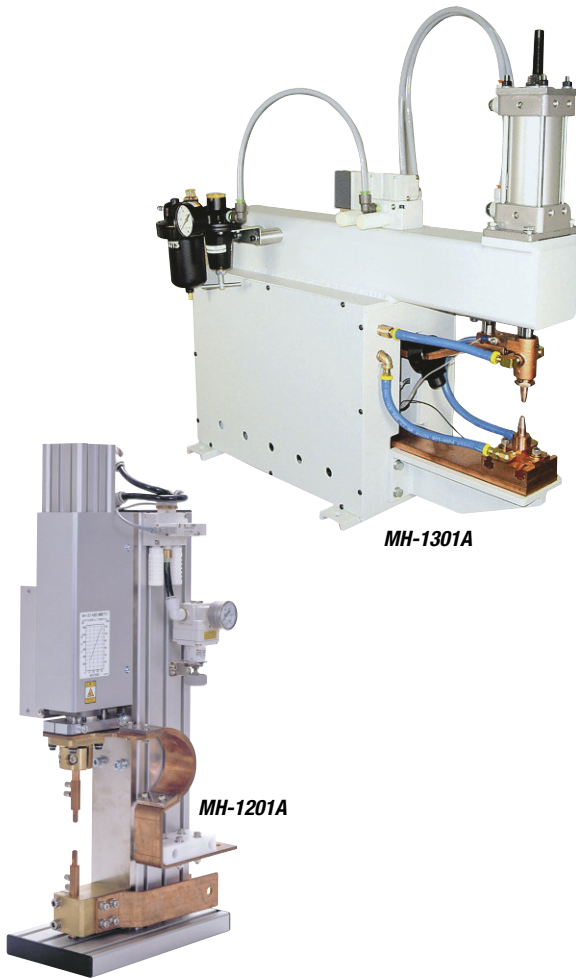


MH Weld Head Range

Designed specifically for more robust resistance and spot welding applications, Amada Miyachi's MH series weld heads are rugged, high performance machines particularly suited to applications such as motor armature fusing, welding automotive stamping, and nut welding.



KEY FEATURES

- Fast follow-up designs improve weld consistency and reduce material expulsion
- Rugged and hard wearing precision slides and solid construction provide long lifetimes
- Load cell and displacement options measure force and weld displacement for complete process benchmarking
- Pre-selected cylinder sizing optimizes force range to application
- Benchtop or pedestal mounting for manual or automated stations

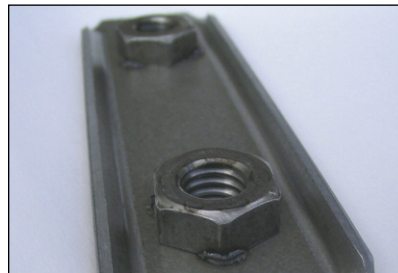
TYPICAL APPLICATIONS



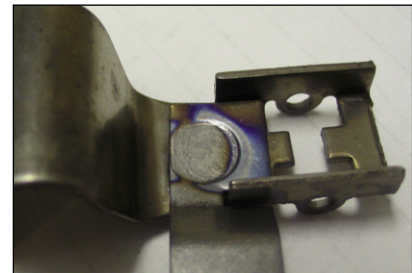
Welding automotive stamping



Magnet wire termination



Nut welding



Component frame construction

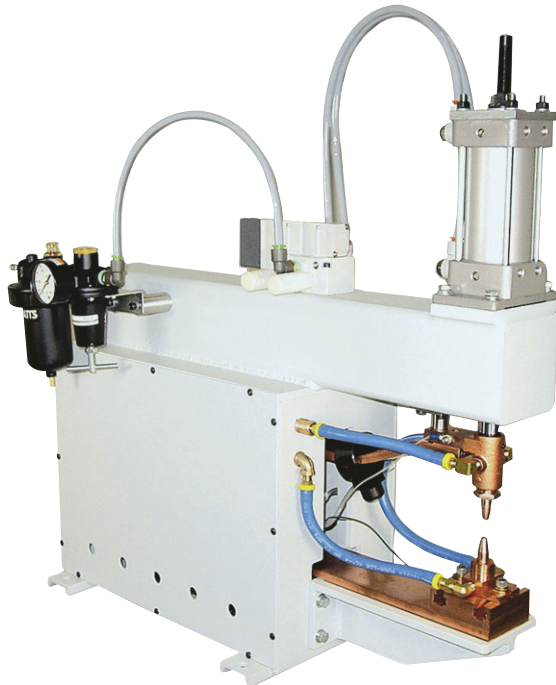
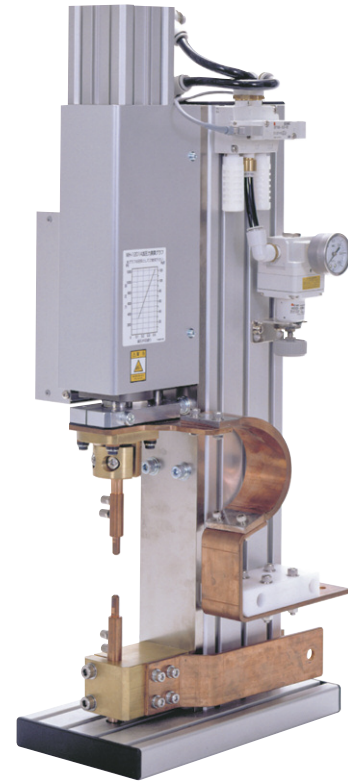
MH-1201A

**Force Range: 70-265 lbs.
10kA Secondary**

KEY FEATURES

The MH-1201A head is an in-line weld head with spring follow-up, mounted to a rigid extrusion. Match to the 300A inverter for light-to-medium welding applications.

- Integrated in-line spring for fast follow-up
- Precision linear bearings for long life
- Precision anti-rotation bearing ensures proper alignment of upper electrode assembly
- Optional displacement sensor mount
- Optional internal load cell
- Throat depth 2.9 inches



MH-1301A

**Force Range: 97-393 lbs.
10kA Secondary**

KEY FEATURES

Integrated transformer inside head

The MH-1301A head has a solid welded frame with provision for an internal mounted transformer. The head features a cup style cylinder for fast follow-up, and has an optional lower electrode holder.

- Low friction cylinder for fast follow-up
- 3-inch stroke for easy part loading
- Lower T-slot platen for custom tooling
- Throat depth 8 inches

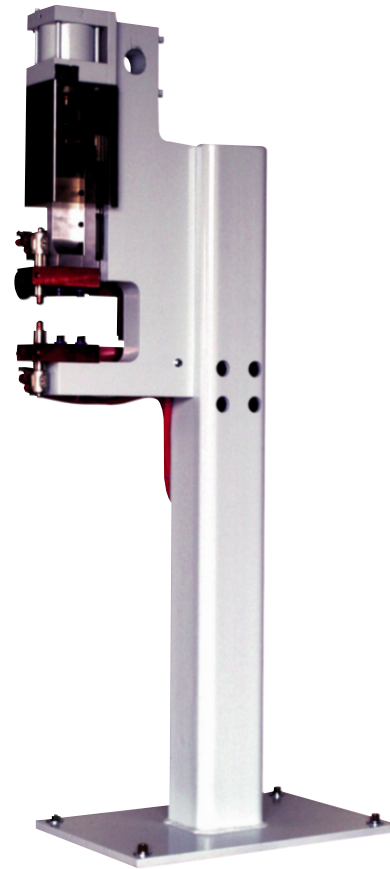
MH-1501A/MH-1601A

Force Range: 250-1570 lbs.
24/40kA Secondary

KEY FEATURES

The MH-1501A and larger MH-1601A are high performance weld heads with the flexibility to optimize the force range to the application. Five different cylinder options mean that the head is always working in the best force and follow-up combination.

- Benchttop or pedestal options
- Low inertia ram with integrated accelerator for fast follow-up
- Ram mounted to slide with zero clearance ball bearings to ensure precise movement
- Many cylinder options for different force ranges
- Throat depth 8 inches



FORCE RANGES OF MH-1501A AND 1601-A HEADS

	MH-1501A	MH-1601A
Force, 2 in cylinder at 20 psi	63 lb (29 kg)	N/A
Force, 2 in cylinder at 80 psi	251 lb (114 kg)	N/A
Force, 3.25 in cylinder at 20 psi	166 lb (75 kg)	N/A
Force, 3.25 in cylinder at 80 psi	664 lb (301 kg)	N/A
Force, 4 in cylinder at 20 psi	251 lb (114 kg)	251 lb (114 kg)
Force, 4 in cylinder at 80 psi	1005 lb (456 kg)	1005 lb (456 kg)
Force, 5 in cylinder at 20 psi	N/A	393 lb (178 kg)
Force, 5 in cylinder at 80 psi	N/A	1570 lb (712 kg)

CURRENT RANGES OF MH-1501A AND 1601-A HEADS

	MH-1501A	MH-1601A
Light duty secondary	12.3 kA	12.3 kA
Heavy duty secondary	24 kA	40 kA

TECHNICAL SPECIFICATIONS

	MH-1201A	MH-1301A	MH-1501A	MH-1601A
Electrode force at 20 psi	97 lb (44 kg)	98 lb (44 kg)	See below	See below
Electrode force at 60 psi	265 lb (120 kg)	–	See below	See below
Electrode force at 80 psi	N/A	393 lb (178 kg)	See below	See below
Air cylinder size	2.48 in (63.0 mm)	2.50 in (63.5 mm)	2 in, 3.25 in, 4 in (51 mm, 83 mm, 102 mm)	4 in, 5 in (102 mm, 127 mm)
Electrode holders	4RW, (#1 MT)	4RW, (#1 MT)	5RW, (#2 MT)	5RW, (#2 MT)
Valve voltage	115 VAC, 24 VDC Optional	115 VAC, 24 VDC optional	115 VAC	115 VAC
Electrode stroke	1.4 in (36 mm)	3 in (76 mm)	1.25 in (32 mm)	3 in (76 mm)
Throat depth	2.9 in (74 mm)	8 in (203 mm)	8 in (203 mm)	8 in (203 mm)
Max. secondary current	10 kA	10 kA	See below	See below

WEIGHT & DIMENSIONS

Dimensions (L x W x H)	Dimensions will vary with options ordered. Call Amada Miyachi America.
Weight	Weights will vary with options ordered. Call Amada Miyachi America.



1820 S. Myrtle Ave. • Monrovia, CA 91016 US
 T: (626) 303-5676 • F: (626) 358-8048
info@amadamiyachi.com • www.amadamiyachi.com
 AMADA MIYACHI AMERICA, INC. ISO 9001 Certified Company • 24/7 Repair Service: 1-866-751-7378



AMERICAS
Amada Miyachi America Midwest
 Wixom, MI 48393
 T: (248) 313-3078
midwestsales@amadamiyachi.com

Amada Miyachi do Brasil Ltda.
 Sao Paulo, Brasil
 T: +55-11-4193-3607
antonio.ruiz@amadamiyachi.com

EUROPE
Amada Miyachi Europe GmbH
 Puchheim, Germany
 T: +49 (0) 89 83 94 030
info@amadamiyachi.eu

ASIA
Amada Miyachi Co., Ltd.
 Noda, 278-0016 Japan
 T: +81-4-7125-6177
sales@miyachi.com

Amada Miyachi Shanghai Co., Ltd.
 Shanghai, China
 T: +86-21-6448-6000
zqzhang@msc.miyachi.com

Amada Miyachi Korea Co., Ltd.
 Gyeonggi-do, Korea
 T: +82-31-8015-6810
dykim@mkc.miyachi.com

Amada Miyachi Taiwan Co., Ltd.
 Taipei, Taiwan R.O.C.
 T: 886-2-2397-4778
keigaku@miyachi.com

Amada Miyachi (Thailand) Co., Ltd.
 Samutprakarn, Thailand
 T: +66-2751-9337-8
info@mtl.miyachi.com

Amada Miyachi Vietnam Co., Ltd.
 Ho Chi Minh City, Vietnam
 T: +84-8-3771-7972

Amada Miyachi India Pvt., Ltd.
 Bangalore, Karnataka
 T: 080-4092-1749 & 3549
info@miyachiindia.com

Amada Miyachi America Mexico
 El Paso, TX 79925
 T: (915) 881-8765
mxsales@amadamiyachi.com

follow us on:



Specifications subject to change without notice. Copyright© 2016 Amada Miyachi America, Inc. The material contained herein cannot be reproduced or used in any other way without the express written permission of Amada Miyachi America, Inc. All rights reserved.