



LW5AGE

532 nm Laser

AMADA MIYACHI's LW5AGE 5W laser welder offers weld speed (2.5x), penetration (~30%) and integration flexibility (2 energy- or time-share outputs). LW5AGE utilizes a 532nm wavelength in the visible (green) spectrum which is better absorbed by highly reflective materials enabling precision micro-welding of gold and copper alloys and offering an efficient alternative for difficult to weld industrial applications that cannot be achieved with a traditional 1064nm YAG laser.

KEY FEATURES

- Green laser beam in the visible spectrum is better absorbed by highly reflective materials enabling precision microwelding of conductive materials like gold and copper alloys
- Non-contact welding process
- Real time power feedback ensures extremely stable pulse-to-pulse energy stability
- Single phase power and air cooled; enables quick set-up and integration into current production line

TYPICAL APPLICATIONS



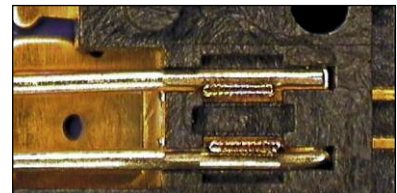
Welding 0.008 in thick copper terminals



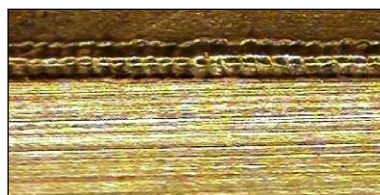
Semiconductor connections



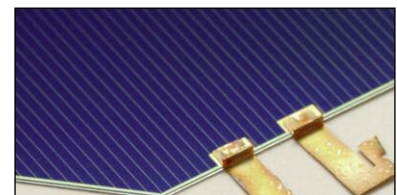
0.004 in diameter gold wire to gold pad



28 gauge gold coated copper wire to terminal



Aluminum to titanium seam weld

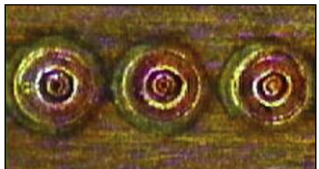


Solar cell

Comparison of welding copper with a standard 1064 nm Nd:YAG laser, and the LW5AGE at 532 nm



1064 nm



532 nm

GREEN LIGHT ENABLES RELIABLE WELDING OF CONDUCTIVE MATERIALS

The 532 nm wavelength is absorbed much better and more consistently than 1064 nm providing reliable welding of conductive parts.

Material	1064 nm	532 nm
Copper	10%	55%
Gold	2%	58%

TECHNICAL SPECIFICATIONS

Green laser welder	LW5AGE
Input power	200-240 VAC Single Phase, +10% / -15%, 7 A, 50/60 Hz
Max. peak power	1.5 kW
Max. output power	5 W
Pulse width	0.20 - 5.00 ms (in 0.02 ms increments)
Pulse repetition rate	1 - 30 pps
Wavelength	532 nm
Positioning guide beam	Built-in (red)
Output stability	± 1.5% rms
Ambient temperature	5 to 30° C
Cooling	Air cooled
Schedules	Up to 32
Number of outputs	2

WEIGHT & DIMENSIONS

Dimensions L x W x H	33.46 in x 16.9 in x 32.3 in (850 mm x 430 mm x 822 mm)
Weight	264 lb (120 kg)



1820 S. Myrtle Ave. • Monrovia, CA 91016 US
 T: (626) 303-5676 • F: (626) 358-8048
info@amadamiyachi.com • www.amadamiyachi.com

AMADA MIYACHI AMERICA, INC. ISO 9001 Certified Company • 24/7 Repair Service: 1-866-751-7378

AMERICAS
AMADA MIYACHI AMERICA (Midwest Office)
 Detroit, Michigan
 T: (248) 313-3078
midwestsales@amadamiyachi.com

AMADA MIYACHI DO BRASIL LTDA.
 Sao Paulo, Brasil
 T: +55-11-4193-3607
antonio.ruiz@amadamiyachi.com

EUROPE
AMADA MIYACHI EUROPE GmbH
 Munich, Germany
 T: +49-89-839403-0
infode@amadamiyachi.eu

ASIA
AMADA MIYACHI CO., LTD.
 Isehara, Japan
 T: +81-47-125-6177
sales@miyachi.com

AMADA MIYACHI KOREA CO., LTD.
 Seoul, Korea
 T: +82-4-7125-6177
dykim@mkc.miyachi.com

AMADA (THAILAND) CO., LTD.
 Bangkok, Thailand
 T: +66-2-170-5977
info@mtl.miyachi.com

AMADA MIYACHI INDIA PVT., LTD.
 Bangalore, Karnataka
 T: +91-80-4092-1749
 or +91-80-4092-3549
info@miyachiindia.com

AMADA MIYACHI AMERICA (Mexico Office)
 El Paso, Texas
 T: (915) 881-8765
mxsales@amadamiyachi.com

AMADA MIYACHI SHANGHAI CO., LTD.
 Shanghai, China
 T: +86-21-6448-6000
jwu@msc.miyachi.com

AMADA MIYACHI TAIWAN CO., LTD.
 Taipei, Taiwan R.O.C.
 T: +886-2-2585-0161

AMADA VIETNAM CO., LTD.
 Ha Noi, Vietnam
 T: +84-4-6261-4583

Specifications subject to change without notice. Copyright© 2018 AMADA MIYACHI AMERICA, INC. The material contained herein cannot be reproduced or used in any other way without the express written permission of AMADA MIYACHI AMERICA, INC. All rights reserved.



follow us on: