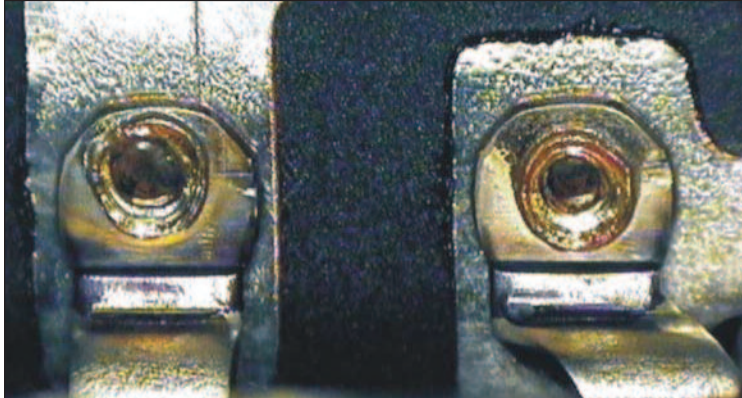
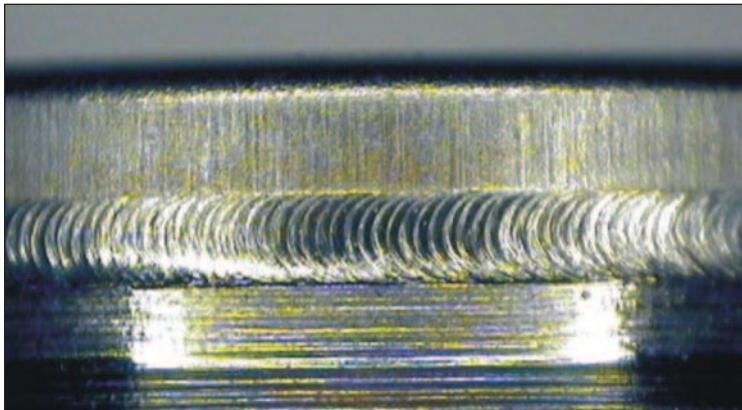


# Welding Applications

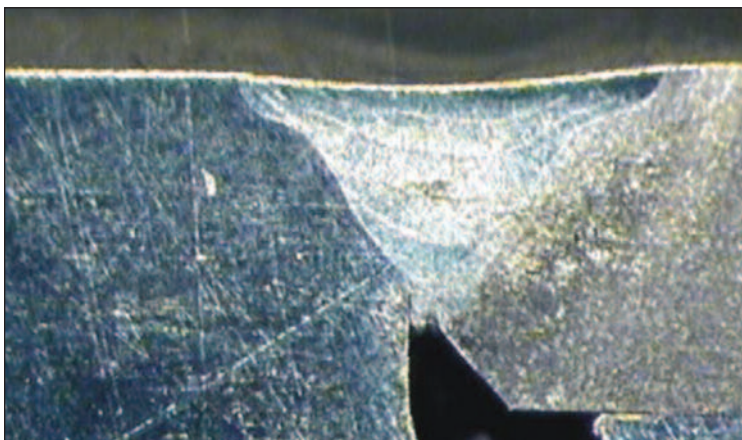
## LW50A, 70A & 150A welders



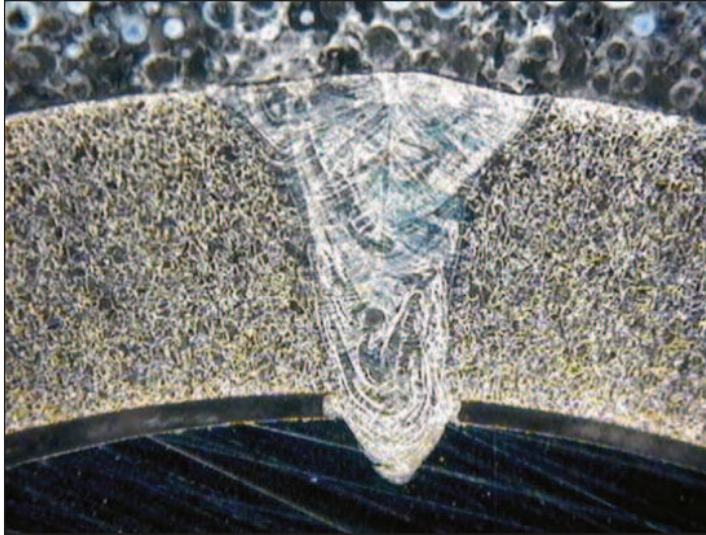
|                    |                   |
|--------------------|-------------------|
| <b>Application</b> | Relay tab weld    |
| <b>Laser</b>       | LW70A             |
| <b>Materials</b>   | Tin coated copper |
| <b>Weld type</b>   | Lap               |
| <b>Focus head</b>  | CCTV 120/100 FX   |
| <b>Fiber</b>       | 600 SI            |
| <b>Penetration</b> | 0.02"             |
| <b>Spot size</b>   | 0.02"             |
| <b>Pulse width</b> | 11.0 ms           |
| <b>Energy</b>      | 53 J              |
| <b>Gas shroud</b>  | Argon             |



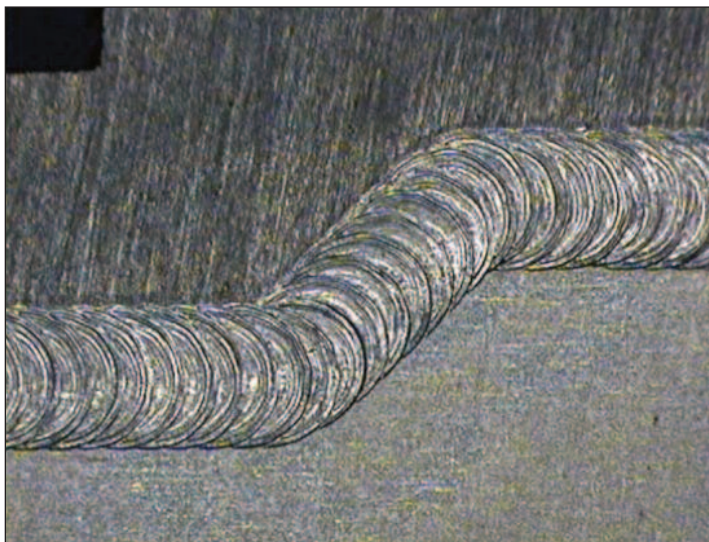
|                    |            |
|--------------------|------------|
| <b>Application</b> | Lid Attach |
| <b>Laser</b>       | LW70A      |
| <b>Materials</b>   | 304 SS     |
| <b>Weld type</b>   | Seam lap   |
| <b>Focus head</b>  | CCTV 70mm  |
| <b>Fiber</b>       | 600 SI     |
| <b>Penetration</b> | 0.01"      |
| <b>Spot Size</b>   | 0.025"     |
| <b>Pulse width</b> | 3.5 ms     |
| <b>Energy</b>      | 2.8 J      |
| <b>Rep rate</b>    | 25 Hz      |



|                    |                  |
|--------------------|------------------|
| <b>Application</b> | Tube seal        |
| <b>Laser</b>       | LW70A            |
| <b>Materials</b>   | 305 SS           |
| <b>Weld type</b>   | Seam butt        |
| <b>Focus head</b>  | CCTV 120/70 H FX |
| <b>Fiber</b>       | 600 SI           |
| <b>Penetration</b> | 0.02"            |
| <b>Spot Size</b>   | 0.02"            |
| <b>Pulse width</b> | 3.0 ms           |
| <b>Energy</b>      | 3 J              |
| <b>Rep rate</b>    | 15 Hz            |
| <b>Gas shroud</b>  | Argon            |



|                    |                  |
|--------------------|------------------|
| <b>Application</b> | Tube attach      |
| <b>Laser</b>       | LW50A            |
| <b>Materials</b>   | Invar and 304 SS |
| <b>Weld type</b>   | Lap              |
| <b>Focus head</b>  | CCTV 100mm       |
| <b>Fiber</b>       | 300 SI           |
| <b>Penetration</b> | 0.03"            |
| <b>Spot size</b>   | 0.015"           |
| <b>Pulse width</b> | 3.5 ms           |
| <b>Energy</b>      | 4 J              |
| <b>Gas shroud</b>  | None             |
| <b>Gas shroud</b>  | Argon            |



|                    |                |
|--------------------|----------------|
| <b>Application</b> | Diaphragm seal |
| <b>Laser</b>       | LW50A          |
| <b>Materials</b>   | 304 SS         |
| <b>Weld type</b>   | Seam butt      |
| <b>Focus head</b>  | CCTV 100mm     |
| <b>Fiber</b>       | 600 SI         |
| <b>Penetration</b> | 0.015"         |
| <b>Spot size</b>   | 0.03"          |
| <b>Pulse width</b> | 2 ms           |
| <b>Rep rate</b>    | 20 Hz          |
| <b>Energy</b>      | 1.5 J          |
| <b>Gas shroud</b>  | Argon          |



1820 S. Myrtle Ave. • Monrovia, CA 91016 US  
 T: (626) 303-5676 • F: (626) 358-8048  
[info@amadamiyachi.com](mailto:info@amadamiyachi.com) • [www.amadamiyachi.com](http://www.amadamiyachi.com)  
 AMADA MIYACHI AMERICA, INC. ISO 9001 Certified Company • 24/7 Repair Service: 1-866-751-7378



**AMERICAS**  
**Amada Miyachi America Midwest**  
 Wixom, MI 48393  
 T: (248) 313-3078  
[midwestsales@amadamiyachi.com](mailto:midwestsales@amadamiyachi.com)

**Amada Miyachi do Brasil Ltda.**  
 Sao Paulo, Brasil  
 T: +55-11-4193-3607  
[antonio.ruiz@amadamiyachi.com](mailto:antonio.ruiz@amadamiyachi.com)

**EUROPE**  
**Amada Miyachi Europe GmbH**  
 Puchheim, Germany  
 T: +49 (0) 89 83 94 030  
[info@amadamiyachi.eu](mailto:info@amadamiyachi.eu)

**ASIA**  
**Amada Miyachi Co., Ltd.**  
 Noda, 278-0016 Japan  
 T: +81-4-7125-6177  
[sales@miyachi.com](mailto:sales@miyachi.com)

**Amada Miyachi Shanghai, Co., Ltd.**  
 Shanghai, China  
 T: +86-21-6448-6000  
[zqzhang@msc.miyachi.com](mailto:zqzhang@msc.miyachi.com)

**Amada Miyachi Korea Co., Ltd.**  
 Gyeonggi-do, Korea  
 T: +82-31-8015-6810  
[dykim@mkc.miyachi.com](mailto:dykim@mkc.miyachi.com)

**Amada Miyachi Taiwan Co., Ltd.**  
 Taipei, Taiwan R.O.C.  
 T: 886-2-2397-4778  
[keigaku@miyachi.com](mailto:keigaku@miyachi.com)

**Amada Miyachi (Thailand) Co., Ltd.**  
 Samutprakarn, Thailand  
 T: +66-2751-9337-8  
[info@mtl.miyachi.com](mailto:info@mtl.miyachi.com)

**Amada Miyachi Vietnam Co., Ltd.**  
 Ho Chi Minh City, Vietnam  
 T: +84-8-3771-7972

**Amada Miyachi India Pvt., Ltd.**  
 Bangalore, Karnataka  
 T: 080-4092-1749 & 3549  
[info@miyachiindia.com](mailto:info@miyachiindia.com)

**Amada Miyachi America Mexico**  
 El Paso, TX 79925  
 T: (915) 881-8765  
[mxsales@amadamiyachi.com](mailto:mxsales@amadamiyachi.com)

follow us on:



Specifications subject to change without notice. Copyright© 2015 Amada Miyachi America, Inc. The material contained herein cannot be reproduced or used in any other way without the express written permission of Amada Miyachi America, Inc. All rights reserved.