



LF Series

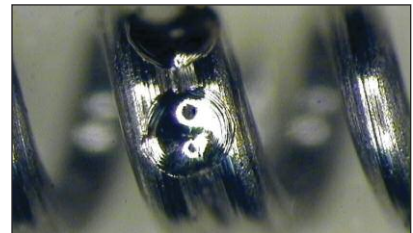
CW Yb: Fiber Laser Welders

The LF Series fiber lasers offer the precise control needed for small component welding and fine precision cutting of metals. A large touchscreen pendant enables clear visibility of process schedule parameters, and an intuitive interface enables quick and easy programming.

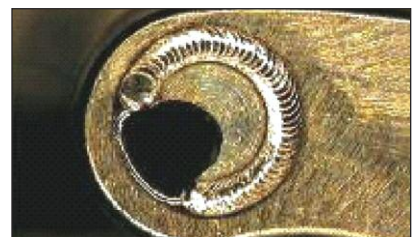
- Spot sizes down to 10 microns for thin metal welding
- Welding penetration depth beyond 0.16" (4 mm) in metals
- Excellent power stability for reliable results
- Simple, intuitive touchscreen user interface
- Safety: CE and CDRH certification, CAT3 safety circuitry

- **Integrated laser system** - Complete system with laser engine, controller, touchscreen interface and chiller (if necessary) integrated into chassis.
- **Micro welding** – The laser is available in either single or multi-mode configuration. Precise control of the laser's pulse width and peak power enables fine micro welding processes. Penetrations up to 0.16 in (4 mm) in steels, titanium and nickel alloys are possible using continuous mode operation.
- **Spot and seam welding** – 10 segment pulse shaping enables best quality spot welding results. Ramp up and ramp down feature controls welding results at the ends of seam welds.
- **Excellent power stability** – Fine applications require high stability of the laser source for reliable processing. The LF Series offers excellent power and pulse to pulse stability with an internal air-to-water cooling mechanism which maintains stability irrespective of ambient air temperature.
- **Accessories** – Full range of focus heads including inline, 90 degree with process viewing via a camera, and through the lens illumination options. Galvo heads are also available. Ultra compact heads are also available if space is a premium.

TYPICAL WELDING APPLICATIONS



Medical spring attachment



Medical component assembly



Battery tab welding

TECHNICAL SPECIFICATIONS

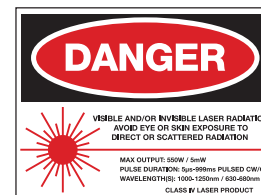
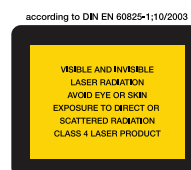
Optical Parameters	
Parameter	Laser Specification
Wavelength	IR (1065 +/- 5 nm)
Operation mode	CW or modulated
Maximum output power	Up to 1000 W
Dynamic range	10%-100% of full power
Beam quality	Single mode and Multi-mode (50 µm core*)
Positioning guide beam	On axis, built in visible laser (Class 3R)
Pulse modulation	Square pulse Up slope, down slope 10 segment pulse shaping

*Larger core diameters available upon request

Integration Parameters	
Parameter	Laser Specification
BDO (beam delivery optic)	QBH compatible (divergent beam) - for 500 W - 1000 W collimated beam for <400 W power
External communication	RS232 / external I/O
Electrical	200-240 V +/-10% single phase
Cooling	Integrated Chiller provided when needed
Operating temperature range	5-40°C (41-104° F)
Operating humidity range	5%-85% (non-condensing)
Safety	Dual channel IEC13849-1 compliant
Fiber length	5 m (standard) - other lengths upon request
Certifications	CE, CDRH

WEIGHT & DIMENSIONS

Size L x W x H	36.7 in x 20.1 in x 41.4 in (933 mm x 511 mm x 1051 mm)
Weight	350 lbs (159 kg)



1820 S. Myrtle Ave. • Monrovia, CA 91016 US
T: (626) 303-5676 • F: (626) 358-8048
info@amadamiyachi.com • www.amadamiyachi.com
ISO 9001 Certified Company • 24/7 Repair Service: 1-866-751-7378

AMERICAS
AMADA MIYACHI
AMERICA (Midwest Office)
Detroit, Michigan
T: (248) 313-3078
midwestsales@amadamiyachi.com

AMADA MIYACHI DO
BRASIL LTDA.
Sao Paulo, Brasil
T: +55-11-4193-3607
antonio.ruiz@amadamiyachi.com

EUROPE
AMADA MIYACHI
EUROPE GmbH
Munich, Germany
T: +49-89-839403-0
infode@amadamiyachi.eu

ASIA
AMADA MIYACHI CO., LTD.
Isehara, Japan
T: +81-47-125-6177
sales@miyachi.com

AMADA MIYACHI
KOREA CO., LTD.
Seoul, Korea
T: +82-4-7125-6177
dykim@mkc.miyachi.com

AMADA
(THAILAND) CO., LTD.
Bangkok, Thailand
T: +66-2-170-5977
info@mtl.miyachi.com

AMADA MIYACHI
INDIA PVT., LTD.
Bangalore, Karnataka
T: +91-80-4092-1749
or +91-80-4092-3549
info@miyachindia.com

AMADA MIYACHI
AMERICA (Mexico Office)
El Paso, Texas
T: (915) 881-8765
mxsales@amadamiyachi.com

AMADA MIYACHI
SHANGHAI CO., LTD.
Shanghai, China
T: +86-21-6448-6000
jwu@msc.miyachi.com

AMADA MIYACHI
TAIWAN CO., LTD.
Taipei, Taiwan R.O.C.
T: +886-2-2585-0161

AMADA
VIETNAM CO., LTD.
Ha Noi, Vietnam
T: +84-4-6261-4583

Specifications subject to change without notice. Copyright © 2018 AMADA MIYACHI AMERICA, INC. The material contained herein cannot be reproduced or used in any other way without the express written permission of AMADA MIYACHI AMERICA, INC. All rights reserved.

