



newhorizon

Pulsed Heat Thermodes

The MIYACHI EAPRO thermode design offers ultra-fast heating and cooling cycles hence minimizing process times. Forced air-cooling after the heating process further speeds the total bonding process.

The thermode is designed to maintain co-planarity and withstand deformation that results from the high forces that may be necessary in some bonding processes. The Pulsed Heat Thermode eliminates voltage drop as current flows through the thermode from front-to-back instead of left-to-right, preventing damage to the parts when soldering.

Wire-Soldering, ACF Bonding, Heat-Sealing & Heat Staking processes require their own specific thermode configurations based on product size, shape and configuration. Amada Miyachi Europe offers a full range of standard as well as custom designs.

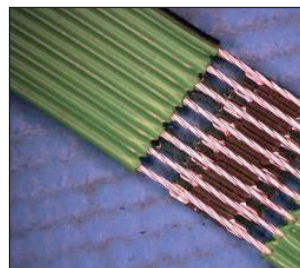
KEY FEATURES

The Pulsed Heat Thermode (Hot Bar), which is the heart of each bonding system, is specially designed by Amada Miyachi Europe for a wide range of applications.

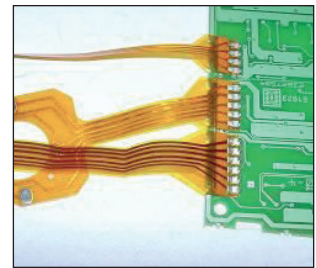
- Robust 3-dimensional design for high force applications and perfect bond planarity
- Fast heating and forced air cooling
- for minimum process cycle times
- Thermode adapter block for easy and fast exchange of thermodes without re-adjustment
- 3-D design eliminates voltage drop on products

Since each customer application demands its own specific requirements, Amada Miyachi Europe offers a complete range of pulsed heat thermodes.

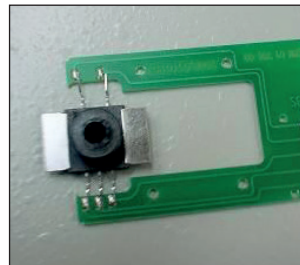
TYPICAL APPLICATIONS



2-D Thermode application Wire Soldering



3-D Thermo-plane thermode application Flex Soldering



3-D Thermo-plane hermode application Leadframe Soldering



Heat stake thermode application mobile phone Heat Staking



TECHNICAL SPECIFICATIONS

2-D Pulsed Heat Thermode				
Dimensions		Thermode Adapter Block	TC-Type	Specify Thermode for order purpose
Length	Width			
5 – 50 mm	1 - 3 mm	0 NH5001	K-type	Width x Length [mm] / custom design
3-D Pulsed Heat Thermo-plane Thermode				
Dimensions		Thermode Adapter Block	TC-Type	Specify Thermode for order purpose
Length	Width			
1 - 75 mm	1 - 4 mm	0 NH5002	K-type	Width x Length [mm]
Reflow soldering area: 1-300 mm ² bond surface. Taking into account maximum bond force defined by actual bond head (80/750 N)				

HOT BAR



Lindberghstrasse 1 • DE-82178 Puchheim, Germany
T: +49 (0) 89 83 94 030 • Fax : +49 (0) 89 839403 68
infode@amadamiyachi.eu • www.amadamiyachieurope.com
ISO 9001 Certified Company



EUROPE

Amada Miyachi Europe BV
Helmond, The Netherlands
T: +31 (0) 492 542 225
info@amadamiyachi.eu

Amada Miyachi Europe Kft.
Budapest, Hungary
T: +36 1 431 9927
infohu@amadamiyachi.eu

Amada Miyachi Europe
Derby, United Kingdom
T: +44 (0) 1332 361 238
info@amadamiyachi.eu

Amada Miyachi Europe
Saint Germain en Laye, France
T: +33 (0) 139 046 430
infofr@amadamiyachi.eu

Amada Miyachi Europe
Torino, Italy
T: +39 011 223 83 16
infoit@amadamiyachi.eu

Amada Miyachi Europe
Prague-West, Czech Republic
T: +420 251 512 157
info@amadamiyachi.eu

AMERICAS

Amada Miyachi America Inc.
Monrovia, CA, USA
T: +1-626-303-5676
info@amadamiyachi.com

Amada Miyachi do Brasil Ltda.
Sao Paulo, Brasil
T: +55-11-4193-1187
antonio.ruiz@miyachi.com

ASIA

Amada Miyachi Co., Ltd.
Noda, Japan
T: +81-4-7125-6177
sales@miyachi.com

Amada Miyachi Shanghai, Co., Ltd.
Shanghai, China
T: +86-21-6448-6000
zqzhang@msc.miyachi.com

Amada Miyachi Korea Co., Ltd.
Gyeonggi-do, Korea
T: +82-31-8015-6810
dykim@mkc.miyachi.com

Amada Miyachi Taiwan Co., Ltd.
Taipei, Taiwan R.O.C.
T: 886-2-2397-4778
keigaku@miyachi.com

Amada Miyachi (Thailand) Co., Ltd.
Samutprakarn, Thailand
T: +66-2751-9337-8
info@mtl.miyachi.com

Amada Miyachi Vietnam Co., Ltd.
Ho Chi Minh City, Vietnam
T: +84-8-3771-7972

Amada Miyachi India Pvt., Ltd.
Bangalore, Karnataka
info@miyachiindia.com

All data, images and text are subject to change at any time. Amada Miyachi Europe GmbH reserves the right to change, modify, delete and add technical specifications and product details at any time without prior notification. © 2015 Amada Miyachi Europe GmbH.

follow us on:



TDS HB newhorizon Pulsed Heat Thermodes 08-2015 EN