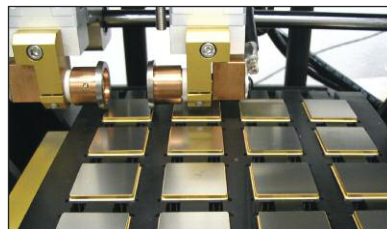
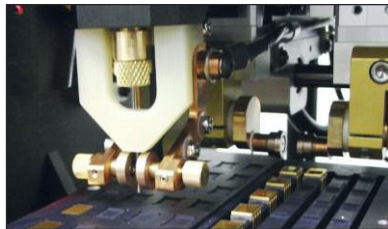


Hermetic Sealing Accessories



- Production Support
- Reliability Testing
- Monitoring and Calibration



PRODUCTION SUPPORT:

Production support accessories make material handing and inspection safer and easier.

STAINLESS STEEL TRAYS

Safely transport microelectronic devices throughout the production process. Also suitable for use as a bakeout tray for hermetic enclosure desiccation ovens. Polished stainless steel. Measures 10 in x 6 1/2 in x 3/4 in

Item	Part No.
Stainless Steel Tray	165-115



DUAL LED GOOSENECK LAMP

Variable light intensity, LED based illuminator offers significant advantages over traditional, halogen lighting including energy savings, and longer bulb life. 20-25% brighter than traditional fiber optic lighting systems. Each 25 in flexible light guide features 12 ultra bright white LEDs mounted on a protective antistatic housing. Ideal for microscope and glovebox auxiliary lighting.



Item	Part No.
Dual LED Gooseneck Lamp	435-308

* 220 VAC models available upon request.

ESD IONIZER FAN

Low noise fan-type ionizer helps eliminate excess static charge that can damage sensitive electronic devices during the hermetic sealing process. This ionizer achieves a +/-13 V ion balance within 1.5 seconds. Its small form adapts well to enclosure mounting or bench top bracket mounting. Produces a flow of 0.66 cu.m/min.



Item	Part No.
ESD Ionizer Fan	270-604



HANDHELD STATIC METER

Compact, lightweight, easy-to-use handheld device measures electrostatic charge on a work piece up to 20 kV , with a resolution of 0.1 kV.

Item	Part No.
Handheld Static Meter	270-603



IONIZED AIR GUN

Ergonomically designed ionized air gun is an excellent tool for blowing particulate contamination off any surface.

Item	Part No.
Ionized Air Gun	285-168

PRODUCTION SUPPORT:



MAGNIFIER LAMP

Ideal for cleanroom applications, this ergonomically designed, diopter table edge clamp mounted magnifier has a fully enclosed, hands-free neck assembly with 45 in arm.

Item	Part No.
Magnifier Lamp	475-551



HOT PLATE

Anodized aluminum heat plate provides even heat distribution with a 0-575°F adjustable thermostat. Complete with a 120 V line cord, fuse, and illuminated on/off switch. Low profile (1.5 in h) unit includes insulated finger rests on 3 sides.

Item	Part No.
Hot Plate	285-166

CORDLESS HANDHELD VACUUM CLEANER

Revolutionary, 3-stage HEPA filtration vacuum system, captures 99.97% of dust, pollen, bacteria and other allergens down to 0.3 microns, making it suitable for clean room applications. Wet or dry pick up. Up to 12 minutes run time per charge. Includes 3 cleaning attachments.



Item	Part No.
Cordless Handheld Vacuum Cleaner	285-167

RELIABILITY TESTING:

Essential tools help determine the reliability of hermetically sealed packages per MIL-STD-883-C.

HELIUM FINE LEAK TEST CHAMBERS

Helium fine leak test chamber flapper boxes with NW25 flange connectors fit most of the helium fine leak detectors available in the microelectronic assembly industry. Polished aluminum finish with Viton O-ring vacuum seal.

Part #	Description
285-160	Test Chamber Flapper Box 4 in (102 mm) diameter x 2 in (51 mm) deep
285-161	Test Chamber Flapper Box 5 in (127 mm) diameter x 2 in (51 mm) deep
285-162	Test Chamber Flapper Box 8 in (203 mm) diameter x 2 in (51 mm) deep



RELIABILITY TESTING:



Helium Calibrated Leak - Refill and Calibration Services

Helium Calibrated Leak Refilling and Calibration Services with NIST Traceable Certification.

AMADA MIYACHI AMERICA offers Helium Calibrated Leak Refilling and Calibration Services with NIST Traceable Certification. Send us any brand of Helium calibrated leak and we will refill and calibrate within a 3 week timeframe.

Contact AMADA MIYACHI AMERICA for details.

Gross Leak Bubble Tester

Gross leak detector test system is a manually operated bubble tester designed to perform gross and intermediate leak tests of microelectronic components in accordance with MIL-STD-883-C. Usable work tray area up to 6 in x 14 in.

Item	Part No.
Gross Leak Bubble Tester	285-163



Perfluoropolyether Solution

Used in most gross bubble leak testers, Galden D-02 perfluoropolyether solution has a low molecular weight and exceptional thermal and oxidative stability, as well as inertness. This solution's non-reactivity, high dielectric strength, low toxicity, non-flammability and non-solvent features make it ideal for electronic reliability testing including thermal shock and hermetic seal testing.

Item	Part No.
Perfluoropolyether Solution	900-387

RELIABILITY TESTING:

HELIUM FINE LEAK DETECTOR

This state-of-the-art spectrometer and vacuum portable dry helium leak detector system provides powerful capabilities, enabling a broad range of test methods for diverse applications conforming to the most rigorous industrial standards and operating dependably in the most challenging environments. Rated to detect helium leak rates up to 5×10^{-10} atm-cc/sec. 110-120 VAC - 15 Amp.

Item	Part No.
Helium Fine Leak Detector	285-164



HELIUM BOMBING CHAMBER

Stainless steel leak test bombing chamber is ideal for leak testing hermetically sealed objects that cannot be connected directly to a leak detector.

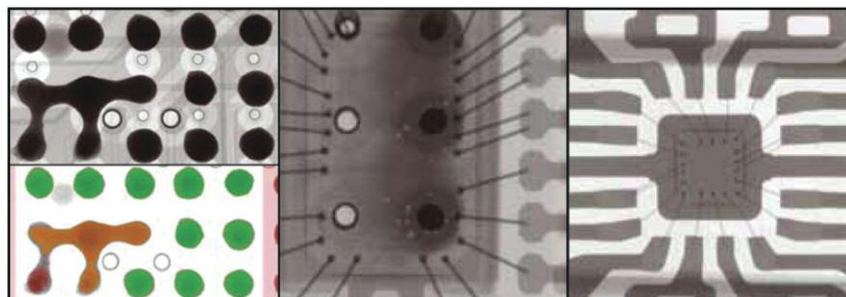
The 9 in diameter x 15 in tall (229 mm x 381 mm) bombing chamber has a capacity of 3 gallons and an oval top opening of 5 7/8 in x 4 7/8 in (149 mm x 124 mm). It is equipped with a 100 psi (6.9 bar) pressure gauge, over pressure relief valve, inlet and exhaust valves with 1/4 in quick connect push fittings.

Item	Part No.
Helium Bombing Chamber	285-165



X-RAY INSPECTION SYSTEM

With the advent of smaller, more sophisticated electronic components, surface inspection is no longer an option, making premium quality real-time X-ray inspection more important than ever. Designed for 100% microBGA, multi-layer and PCB solder joint inspection, this X-ray system is a high precision, flexible solution that facilitates defect analysis. The system's Inspect-X software offers automated inspection functions and (optional) automatic board identification, ensuring high inspection throughput rates. The Nikon model XT V130C is a 130 kV electronic packaging X-ray inspection system (STDS-600-105) which features 4 axis motion and can view a maximum part size of 16 in x 16 in. The system includes both proprietary X-Tek software (ASOF-600-010) and 3 days on-site installation and training.



Item	Part No.
X-Ray Inspection System	270-600

MONITORING AND CALIBRATION:

Essential tools to ensure that production equipment is calibrated and performing at optimum efficiency

STANDALONE GAS ANALYZER KIT

Kit includes necessary fittings and pneumatic tubing to integrate a standalone process gas analyzer in to an existing atmospheric enclosure.



1000 PPM TRACE OXYGEN GAS ANALYZER

Recommended for monitoring oxygen content of process gas inside a glovebox atmospheric enclosure. Typically used for

hermetic sealing processes which require the least oxygen content in their process. Sensor is highly stable and requires only annual SPAN calibration. No programmed cell replacement required. 220-240 VAC.

Item	Part No.
0 – 1000 PPM Trace Oxygen Gas Analyzer	217-00000-002



0-25% HELIUM IN NITROGEN GAS ANALYZER

Recommended for monitoring a binary gas mixture - helium and nitrogen process gas mixture inside the glovebox. Typically used to verify the ratio coming from a manual or automated two gas proportional mixer. Sensor is highly stable and requires only annual SPAN calibration.

Item	Part No.
0-25% Helium in Nitrogen Gas Analyzer	217-00000-000



MM370A-00-01

Linear Sensor Bracket p/n: 112-04886-000

Linear Sensor p/n: 65-1630A

Current Sensor MB-500-15

Voltage Monitoring Cable

PROJECTION WELDERS

Essential weld monitoring kit tool easily adaptable to the Pulsar Series Weld supply and the KN2 weld head. Measure actual weld current, voltage and projection collapse.

Item	Part No.
MM370 Weld Monitor with Linear Displacement Sensor Kit	MM370-KIT1
Probe, MM-730A	GS-1830A
Weld Checker, MM-370-00-01	3-370-02
Voltage Pickup, Cable DC25	4-35670-02
Mount, Linear Encoder	112-04886-000
Toroidal Coil Flexible	MB-500-15
Screw 8-32 x 3/8 SOCHD Cap	625-155

MONITORING AND CALIBRATION:

SPAN GAS CALIBRATION KIT

Recommended for calibrating gas monitoring systems. Neatly packaged in a portable hard plastic carry-case containing 2 disposable 103 liter NIST traceable calibrated span gas and 2 push button fixed-flow gas regulators. Ensures a steady 0.25 liter / hour flow to facilitate ease in calibrating analytical gas analyzers in clean room production areas. Eliminates safety hazards and particle contamination in transporting heavy gas tanks in clean rooms.



Part #	139-00001-000	139-00003-000
Description	% Oxygen Sensor Calibration Kit <ul style="list-style-type: none"> • Hard plastic carry case p/n 165-023 • 100% nitrogen span gas p/n 285-005 • 20.9% oxygen in nitrogen span gas p/n 285-004 • 2 pcs 0.25 l/m push button gas regulators p/n 720-305 	% Helium In Nitrogen Calibration Kit <ul style="list-style-type: none"> • Hard plastic carry case p/n 165-023 • 100% nitrogen span gas p/n 285-005 • 10% Helium in Nitrogen Span gas p/n 285-007 • 2 pcs 0.25 l/m push button gas regulators p/n 720-305
Part #	139-00002-000	139-00004-000
Description	Trace Oxygen Sensor Calibration Kit <ul style="list-style-type: none"> • Hard plastic carry case p/n 165-023 • 100% nitrogen span gas p/n 285-005 • 40 PPM oxygen in nitrogen span gas p/n 285-006 • 2 pcs 0.25 l/m push button gas regulators p/n 720-305 	% Helium In Argon Sensor Calibration Kit <ul style="list-style-type: none"> • Hard plastic carry case p/n 165-023 • 100% argon span gas p/n 285-009 • 10% helium in argon span gas p/n 285-008 • 2 pcs 0.25 l/m push button gas regulators p/n 720-305



*1 in Diameter Electrode Holder Planarity and Alignment Kit
P/N 139-00005-000*



*2 in Diameter Electrode Holder Planarity and Alignment Kit
P/N 139-00006-000*

KN-II WELDHEAD ELECTRODE HOLDER PLANARITY AND ALIGNMENT KIT

Essential tooling for performing mechanical calibration on the KN-II die set weld head alignment. Ensures top and bottom electrode holders are aligned, and surfaces are co-planar. Proper alignment of the weld head ensures a reliable and repeatable welding process.

Part #	Description
139-00005-000	1 in Diameter Electrode Holder Alignment Kit <ul style="list-style-type: none"> • Flatness tool 3 pcs p/n 112-02364-000 (1 pair to be used for flatness, 1 pc to be used for alignment to mate with p/n 112-02364-001) • Top to bottom electrode holder alignment tool p/n 112-02364-001
139-00006-000	2 in Diameter Electrode Holder Alignment Kit <ul style="list-style-type: none"> • Flatness tool 1 pair p/n 112-04243-003 • Top to bottom electrode holder alignment tool p/n 112-0243-002

MONITORING AND CALIBRATION:

RECOMMENDED MECHANICAL CALIBRATION TOOLS

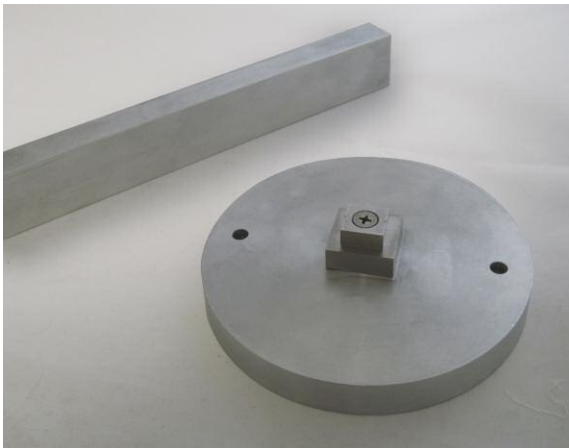
Essential tools for performing mechanical and weld force calibration requirements on the AMADA MIYACHI AMERICA SM and AF Series seam welders. These tools were specifically designed to aid in performing or verification of the equipment's gantry squareness, symmetry, rotary table center reference, and weld force calibration. Maintaining a properly calibrated seam welder will ensure a reliable and repeatable welding process.



DIGITAL FORCE GAUGE KIT

Recommended for calibrating welding force sensors. Kit includes load cell fixture which mounts directly to the seam welder's rotary stage and an LED digital display. 0 to 25 lbs (0-11,000.0 g) load capacity.

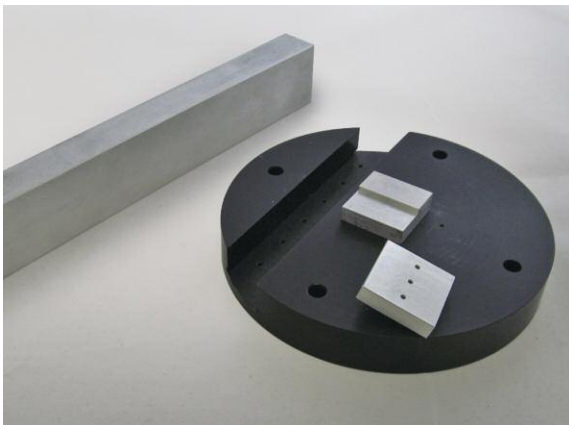
Item	Part No.
Digital Force Gauge Kit	101-00013-000



SM Series Mechanical Calibration Kit

Recommended for performing mechanical alignment on SM Series Benchmark™ Seam Welders. Ensures that the electrodes are centered and symmetrical with reference to the rotary stage's center.

Part #	Description
10-091-01	SM Series Mechanical Calibration kit <ul style="list-style-type: none"> • Calibration nest p/n 101-00001-000 • Parallel Bar p/n 101-00040-000



AF Series Mechanical Calibration Kit

Recommended for performing mechanical alignment on AF Series Benchmark™ Seam Welders. Ensures that the weld and tack electrodes, camera, and pick tube are properly aligned with reference to the rotary stage's center.

Part #	Description
10-090-01	AF Series Mechanical Calibration kit <ul style="list-style-type: none"> • Calibration nest p/n 101-00037-000 • Electrode Track Zero Alignment Pad p/n 101-00038-000 • Table Center reference Alignment Pad p/n 101-00039-000 • Parallel Bar p/n 101-00040-000

MONITORING AND CALIBRATION:



GAS FLOW SWITCH

Switch can be installed in gas air lines to monitor and ensure presence of gas flow into a pneumatic system.

Item	Part No.
Gas Flow Switch	270-601



TEMPERATURE DATA LOGGER

A useful tool for external temperature monitoring and profiling. Features USB connectivity, runs Windows® platform software, and autothermocouple-type sensing.

Item	Part No.
Temperature Data Logger	270-602

FLAT THERMOCOUPLES

Ultra thin (50 microns) Type-K Thermocouples with standard Omega connectors used for external temperature profiling and temperature verification. Ultra thin design makes it easy to attached to glovebox oven walls or heated shelves. May also be attached to actual parts being baked to verify part temperature during the bakeout process. Also useful for applications like thermode face temperature testing.

Item	Part No.
Flat Thermocouples	701-061



PRESSURE INDICATING FILM

Even weld force is a key factor in achieving a repeatable process. Pressure indicating film is a useful tool to inspect pressure applied on a weld area. A good visual indicator showing darker impressions signifies higher force. Highly recommended to help resolve electrode or thermode co-planarity issues which results in uneven heat transfer.

Item	Part No.
Pressure Indicating Film (270 mm x 5 m)	900-382



1820 S. Myrtle Ave. • Monrovia, CA 91016 US
T: (626) 303-5676 • F: (626) 358-8048
info@amadamiyachi.com • www.amadamiyachi.com
ISO 9001 Certified Company • 24/7 Repair Service: 1-866-751-7378

AMERICAS
AMADA MIYACHI
AMERICA (Midwest Office)
Detroit, Michigan
T: (248) 313-3078
midwestsales@amadamiyachi.com

AMADA MIYACHI DO
BRASIL LTDA.
Sao Paulo, Brasil
T: +55-11-4193-3607
antonio.ruiz@amadamiyachi.com

EUROPE
AMADA MIYACHI
EUROPE GmbH
Munich, Germany
T: +49-89-839403-0
infode@amadamiyachi.eu

ASIA
AMADA MIYACHI CO., LTD.
Isehara, Japan
T: +81-47-125-6177
sales@miyachi.com

AMADA MIYACHI
KOREA CO., LTD.
Seoul, Korea
T: +82-4-7125-6177
dykim@mkc.miyachi.com

AMADA
(THAILAND) CO., LTD.
Bangkok, Thailand
T: +66-2-170-5977
info@mtl.miyachi.com

AMADA MIYACHI
INDIA PVT., LTD.
Bangalore, Karnataka
T: +91-80-4092-1749
or +91-80-4092-3549
info@miyachiindia.com

AMADA MIYACHI
AMERICA (Mexico Office)
El Paso, Texas
T: (915) 881-8765
mxsales@amadamiyachi.com

AMADA MIYACHI
SHANGHAI CO., LTD.
Shanghai, China
T: +86-21-6448-6000
jwu@msc.miyachi.com

AMADA MIYACHI
TAIWAN CO., LTD.
Taipei, Taiwan R.O.C.
T: +886-2-2585-0161

AMADA
VIETNAM CO., LTD.
Ha Noi, Vietnam
T: +84-4-6261-4583

Specifications subject to change without notice. Copyright© 2018 AMADA MIYACHI AMERICA, INC. The material contained herein cannot be reproduced or used in any other way without the express written permission of AMADA MIYACHI AMERICA, INC. All rights reserved.



follow us on: