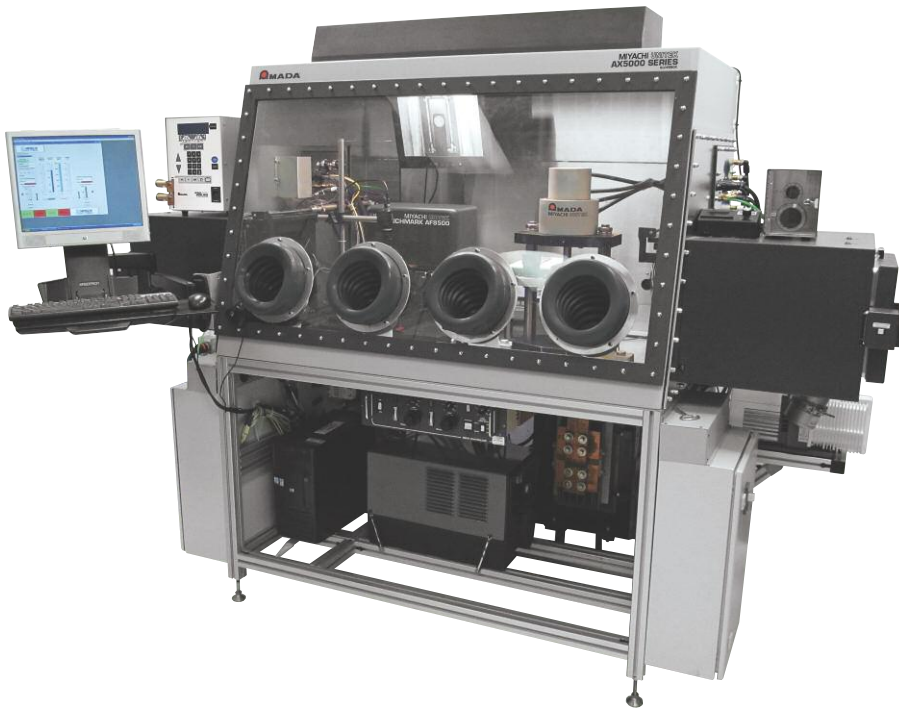


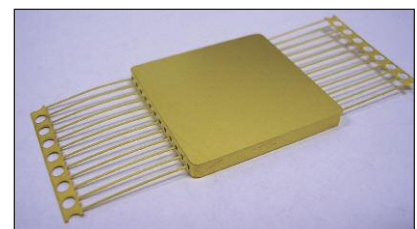
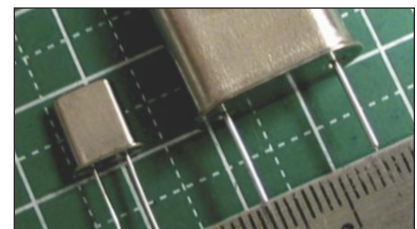
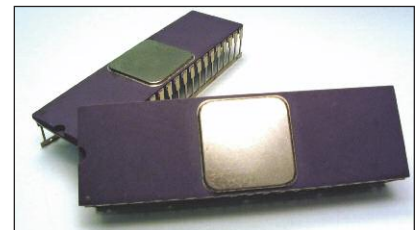
AX5000

Glovebox Welding System



AX5000 is an ideal **glovebox** for the precise control of moisture, pressure and gas composition of a processing environment. It provides fully-integrated computer control of the system including enclosure pressure, interior and exterior doors, gas and moisture analysis and control instrumentation, vacuum ovens, and antechambers. The glovebox can maintain an inert environment with ultra-low moisture and oxygen levels to meet the most demanding process standards.

TYPICAL APPLICATIONS



KEY FEATURES

- Historical and real time graphical display of operating parameters, atmospheric conditions, status, data acquisition and oven bakeout batch reports
- Independent vacuum pumping systems dedicated to automatically and completely evacuating designated chambers
- Wide variety of vacuum oven configurations with exclusive closed-loop computer control and monitoring of each oven surface including heated shelves, ensures temperature stability
- Automatic push button inner and outer doors on ovens and antechambers
- Fully-integrated electronic gas pressure control system with user-selectable set points and oil-less check valve
- Integrated moisture, oxygen and helium gas analyzers with real-time environmental control. Set points can be selected to trigger alarms or inhibit processes. Digital output provided for interface to process equipment

TECHNICAL SPECIFICATIONS

Antechambers and Ovens	Features
Configuration options	End, front, rear loading
Heating	Wall heating or heated shelves
Temperature	0 - 200° C std., higher available
Vacuum pumps	Rotary vane, dry, or turbo pumps
Analysis and Monitoring Capabilities	
Trace oxygen detection range	0.0 - 1000 PPM
% Oxygen detection range	0.00 - 25.00%
Moisture detection range	GUI display -20.00 to -100 dewpoint° C or 0.00-1000 PPM (sensor range +20.00 to -100 dp° C)
Helium monitoring	0.00 - 25% helium in nitrogen or argon environment
Utilities	
Electrical	3-phase, 5-wire, 30 A, 50/60 Hz 208-240 VAC or 380-415 VAC
Inputs	
Environmental gas	60 psi (415kPa) 200 SCFH (5.6 m3/h) minimum
Automatic door gas	80 psi (550kPa) 200 SCFH (5.6 m3/h) minimum
Chilled water (oven flange cooling)	20 - 27° C, 0.5 L/min minimum flow or optional integrated water recirculator
Gas Purification	
Single column manual	30 CFM (51 m3/hr) Moisture and/or oxygen removal 1.0 PPM Oxygen
Dual column manual	
Dual column automatic	
Gas Mixers	
Manual set control	Two and three gas versions
Automatic closed loop control	Two and three gas versions
Others	
Soot removal systems	2 micron 30 CFM (51 m3/hr) or 100 CFM (170 m3/hr)
CDRH class 1 eyesafe window	Wavelength based on application
Light tower	Indicates glovebox process status
Tool interchange	Floor access, front loading
Safety	Light curtain, interlocks

WEIGHT & DIMENSIONS

	AX5000 - 48	AX5000 - 56
Dimensions (L x W x H)	39 in x 48 in x 36 in (991 mm x 1219 mm x 915 mm)	39 in x 56 in x 36 in (991 mm x 1423 mm x 915 mm)
Number of glove ports	2	4
Weight	Will vary with selected options	Will vary with selected options

Other configurations and custom sizes available

Specifications are subject to change without notice.



1820 S. Myrtle Ave. • Monrovia, CA 91016 US
T: (626) 303-5676 • F: (626) 358-8048
info@amadamiyachi.com • www.amadamiyachi.com
ISO 9001 Certified Company • 24/7 Repair Service: 1-866-751-7378

AMADA MIYACHI AMERICA, INC.

MIYACHI | MIYACHI | MIYACHI
UNITEK | P E G O | EAPRO

AMERICAS
AMADA MIYACHI
AMERICA (Midwest Office)
Wixom, MI 48393
T: (248) 313-3078
midwestsales@amadamiyachi.com

AMADA MIYACHI DO
BRASIL LTDA.
Sao Paulo, Brasil
T: +55-11-4193-3607
antonio.ruiz@amadamiyachi.com

EUROPE
AMADA MIYACHI
EUROPE GmbH
Puchheim, Germany
T: +49 (0) 89 83 94 030
infode@amadamiyachi.eu

ASIA
AMADA MIYACHI CO., LTD.
Noda, 278-0016 Japan
T: +81-31-8015-6810
sales@miyachi.com

AMADA MIYACHI
SHANGHAI CO., LTD.
Shanghai, China
T: +86-21-6448-6000
jwu@msc.miyachi.com

AMADA MIYACHI
KOREA CO., LTD.
Gyeonggi-do, Korea
T: +82-4-7125-6177
dykim@mkc.miyachi.com

AMADA MIYACHI
TAIWAN CO., LTD.
Taipei, Taiwan R.O.C.
T: +886-2-2585-0161

AMADA MIYACHI
(THAILAND) CO., LTD.
Samutprakarn, Thailand
T: +66-2-170-5977
info@mtl.miyachi.com

AMADA
VIETNAM CO., LTD.
Ha Noi, Vietnam
T: +84-4-6261-4583

AMADA MIYACHI
INDIA PVT., LTD.
Bangalore, Karnataka
T: +91-80-4092-1749
or +91-80-4092-3549
info@miyachindia.com

AMADA MIYACHI
AMERICA (Mexico Office)
El Paso, TX 79925
T: (915) 881-8765
mxsales@amadamiyachi.com

follow us on:



Specifications subject to change without notice. Copyright © 2017 AMADA MIYACHI AMERICA, INC. The material contained herein cannot be reproduced or used in any other way without the express written permission of AMADA MIYACHI AMERICA, INC. All rights reserved.